



L6TPO621N5

EN User Manual | **Washing Machine**



Welcome to AEG! Thank you for choosing our appliance.



Get usage advice, brochures, trouble shooter, service and repair information:
www.aeg.com/support

Subject to change without notice.

CONTENTS

1. SAFETY INFORMATION.....	2
2. SAFETY INSTRUCTIONS.....	4
3. PRODUCT DESCRIPTION.....	6
4. TECHNICAL DATA.....	7
5. INSTALLATION.....	7
6. CONTROL PANEL.....	10
7. PROGRAMME CHART.....	11
8. OPTIONS.....	14
9. SETTINGS.....	15
10. BEFORE FIRST USE.....	15
11. DAILY USE.....	15
12. HINTS AND TIPS.....	18
13. CARE AND CLEANING.....	20
14. TROUBLESHOOTING.....	23
15. CONSUMPTION VALUES.....	25
16. ENVIRONMENTAL CONCERNS.....	27

1. SAFETY INFORMATION



Before beginning the installation and use of this appliance, carefully read the supplied instructions. The manufacturer is not responsible for any injuries or damage that are the result of incorrect installation or usage. Always keep the instructions in a safe and accessible location for future reference.

1.1 Children and vulnerable people safety

- This appliance can be used by children aged from 8 years and above and persons with reduced physical, sensory or mental capabilities or lack of experience and knowledge if they have been given supervision or instruction concerning the use of the appliance in a safe way and understand the hazards involved.

- Children between 3 and 8 years of age and persons with very extensive and complex disabilities shall be kept away from the appliance unless continuously supervised.
- Children of less than 3 years of age should be kept away from the appliance unless continuously supervised.
- Children should be supervised to ensure that they do not play with the appliance.
- Keep all packaging away from children and dispose of it appropriately.
- Keep detergents away from children.
- Keep children and pets away from the appliance when the door is open.
- Children shall not carry out cleaning and user maintenance of the appliance without supervision.

1.2 General Safety

- This appliance is for washing domestic-type, machine-washable laundry only.
- This appliance is designed for single household domestic use in an indoor environment.
- This appliance may be used in, offices, hotel guest rooms, bed & breakfast guest rooms, farm guest houses and other similar accommodation where such use does not exceed (average) domestic usage levels.
- Do not change the specification of this appliance.
- The appliance maximum load is 6 kg. Do not exceed the maximum load of each programme (refer to the “Programmes” chapter).
- The operating water pressure at the water entry point from the outlet connection must be between 0.5 bar (0.05 MPa) and 10 bar (1.0 MPa).
- The ventilation opening in the base must not be covered by a carpet, mat, or any floor covering.
- The appliance must be connected to the water mains using the new supplied hose sets, or other new hose sets supplied by the Authorised Service Centre.

- Old hose sets must not be reused.
- If the mains power supply cable is damaged, it must be replaced by the manufacturer, its Authorised Service Centre or similarly qualified persons to avoid an electrical hazard.
- Before any maintenance operation, deactivate the appliance and disconnect the mains plug from the socket.
- Do not use high pressure water sprays and/or steam to clean the appliance.
- Clean the appliance with a moist cloth. Use only neutral detergents. Do not use abrasive products, abrasive cleaning pads, solvents or metal objects.

2. SAFETY INSTRUCTIONS

2.1 Installation



The installation must comply with relevant national regulations.

- Remove all the packaging and the transit bolts including rubber bush with plastic spacer.
- Keep the transit bolts in a safe place. If the appliance is to be moved in the future they must be reattached to lock the drum to prevent an internal damage.
- Always take care when moving the appliance as it is heavy. Always use safety gloves and enclosed footwear.
- Follow the installation instructions supplied with the appliance.
- Do not install or use a damaged appliance.
- Do not install or use the appliance where the temperature can be less than 0°C or where it is exposed to the weather.
- The floor area on which the appliance is to be installed must be flat, stable, heat resistant and clean.
- Make sure that there is air circulation between the appliance and the floor.
- When the appliance is in its permanent position, check if it is levelled correctly with the aid of a spirit level. If it is not, adjust the feet accordingly.

- Do not install the appliance directly above a floor drain.
- Do not spray water on the appliance and do not expose it to excessive humidity.
- Do not install the appliance where the appliance lid cannot be fully opened.
- Do not put a closed container to collect possible water leakage under the appliance. Contact the Authorised Service Centre to ensure which accessories can be used.

2.2 Electrical connection

WARNING!

Risk of fire and electric shock.

- **WARNING:** This appliance is designed to be installed / connected to a grounding connection in the building.
- Always use a correctly installed shockproof socket.
- Make sure that the parameters on the rating plate are compatible with the electrical ratings of the mains power supply.
- Do not use multi-plug adapters and extension cables.
- Make sure not to cause damage to the mains plug and to the mains cable. Should the mains cable need to be replaced, this must be carried out by our Authorised Service Centre.

- Connect the mains plug to the mains socket only at the end of the installation. Make sure that there is access to the mains plug after the installation.
- Do not touch the mains cable or the mains plug with wet hands.
- Do not pull the mains cable to disconnect the appliance. Always pull the mains plug.

2.3 Water connection

- The inlet water shall not exceed 25 °C.
- Do not cause damage to the water hoses.
- Before connection to new pipes, pipes not used for a long time, where repair work has been carried out or new devices fitted (water meters, etc.), let the water flow until it is clean and clear.
- Ensure that there are no visible water leaks during and after the first use of the appliance.
- Do not use an extension hose if the inlet hose is too short. Contact the Authorised Service Centre for the replacement of the inlet hose.
- When unpacking the appliance, It is possible to see water flowing from the drain hose. This is due to the testing of the appliance with the use of water in the factory.
- You can extend the drain hose to maximum 400 cm. Contact the Authorised Service Centre for the other drain hose and the extension.
- Make sure that there is access to the tap after the installation.

2.4 Use

WARNING!

Risk of injury, electric shock, fire, burns or damage to the appliance.

- Follow the safety instructions on the detergent packaging.
- Do not put flammable products or items that are wet with flammable products in, near or on the appliance.
- Do not wash fabrics which are heavily soiled with oil, grease or other greasy substances. It can damage rubber parts of the washing machine. Prewash such fabrics by hand before loading them into the washing machine.

- Make sure that all metal objects are removed from the laundry.

2.5 Service

- To repair the appliance contact the Authorised Service Centre. Use original spare parts only.
- Please note that self-repair or non-professional repair can have safety consequences and might void the guarantee.
- The following spare parts will be available for 10 years after the model has been discontinued: motor and motor brushes, transmission between motor and drum, pumps, shock absorbers and springs, washing drum, drum spider and related ball bearings, heaters and heating elements, including heat pumps, piping and related equipment including hoses, valves, filters and aquastops, printed circuit boards, electronic displays, pressure switches, thermostats and sensors, software and firmware including reset software, door, door hinge and seals, other seals, door locking assembly, plastic peripherals such as detergent dispensers. Please note that some of these spare parts are only available to professional repairers, and that not all spare parts are relevant for all models.
- Concerning the lamp(s) inside this product and spare part lamps sold separately: These lamps are intended to withstand extreme physical conditions in household appliances, such as temperature, vibration, humidity, or are intended to signal information about the operational status of the appliance. They are not intended to be used in other applications and are not suitable for household room illumination.

2.6 Disposal

WARNING!

Risk of injury or suffocation.

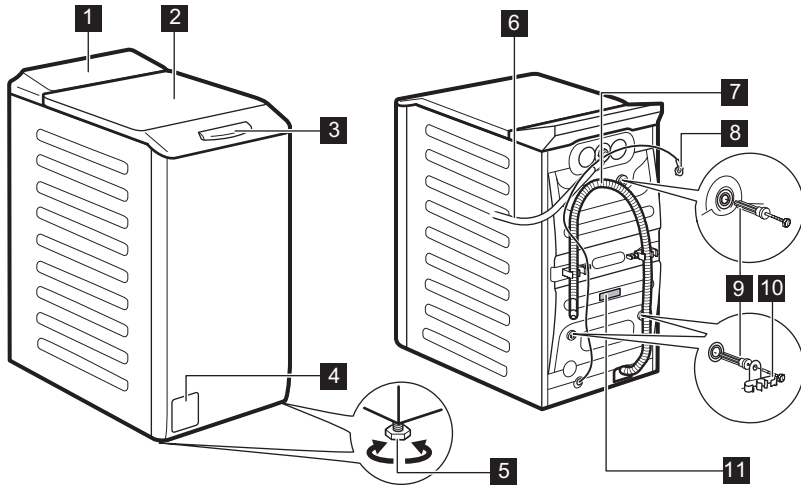
- Disconnect the appliance from the mains electrical and water supplies.
- Cut off the mains electrical cable close to the appliance and dispose of it.

- Remove the door catch to prevent children or pets from becoming trapped in the drum.
- Dispose of the appliance in accordance with local requirements for the disposal of

Waste Electrical and Electronic Equipment (WEEE).

3. PRODUCT DESCRIPTION

3.1 Appliance overview

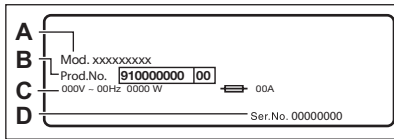


- 1** Control panel
- 2** Lid
- 3** Lid handle
- 4** Drain pump filter
- 5** Feet for levelling the appliance
- 6** Inlet hose

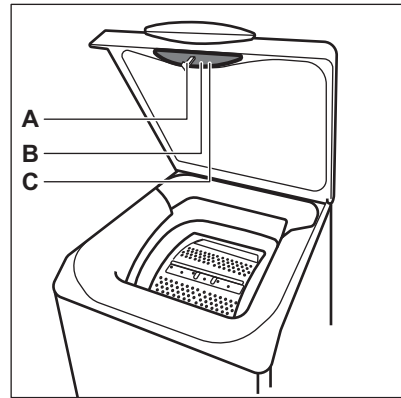
- 7** Drain hose
- 8** Mains cable
- 9** Transit bolts
- 10** Hose support
- 11** Rating plate

Information for register product.

The **rating plate** reports the model name (A) , product number (B), electrical ratings (C) and serial number (D).



The **info label** reports the model name (A), product number (B) and serial number (C).



4. TECHNICAL DATA

Dimension	Width/ Height/ Total depth	39,7 cm /89,0 cm /59,9 cm
Electrical connection	Voltage Overall power Fuse Frequency	230 V 2200 W 10 A 50 Hz
Level of protection against ingress of solid particles and moisture ensured by the protective cover, except where the low voltage equipment has no protection against moisture		IPX4
Water supply pressure	Minimum Maximum	0.5 bar (0.05 MPa) 10 bar (1.0 MPa)
Water supply ¹⁾		Cold water
Maximum Load	Cotton	6 kg
Spin Speed	Maximum spin speed	1151 rpm

¹⁾ Connect the water inlet hose to a water tap with a 3/4" thread.

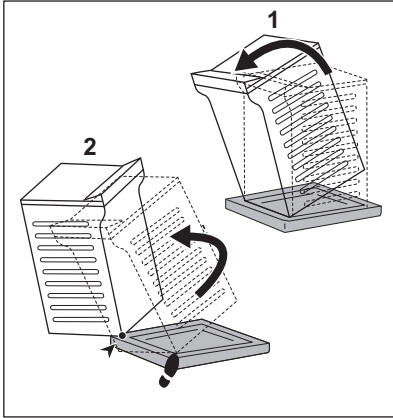
5. INSTALLATION

⚠ WARNING!

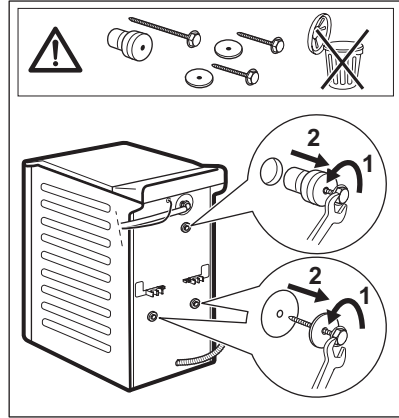
Refer to Safety chapters.

5.1 Unpacking and positioning

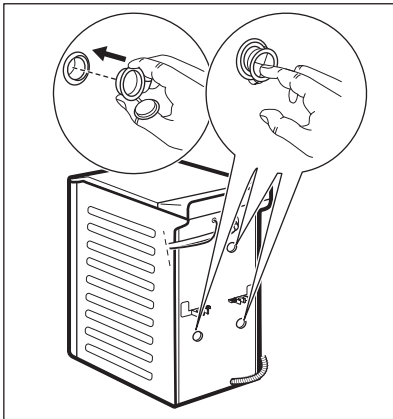
1.



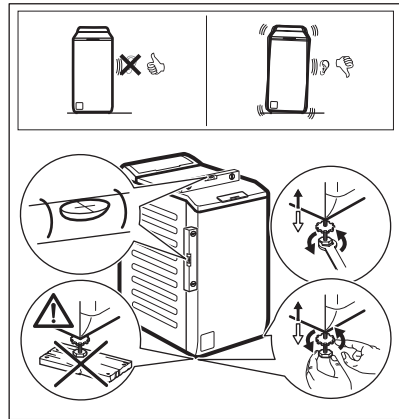
2.



3.



4.



Adjust the appliance correctly to prevent vibration, noise and movement of the appliance when it operates.

WARNING!

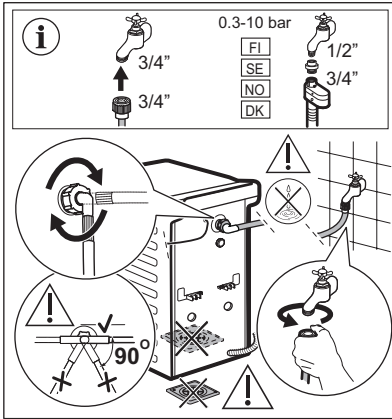
Do not put cardboard, wood or equivalent materials below the appliance feet to adjust the level.

i

Make sure that carpets do not stop the air circulation below the appliance. Make sure that the appliance does not touch the wall or other units.

We recommend that you keep the packaging and the transit bolts for any transport of the appliance.

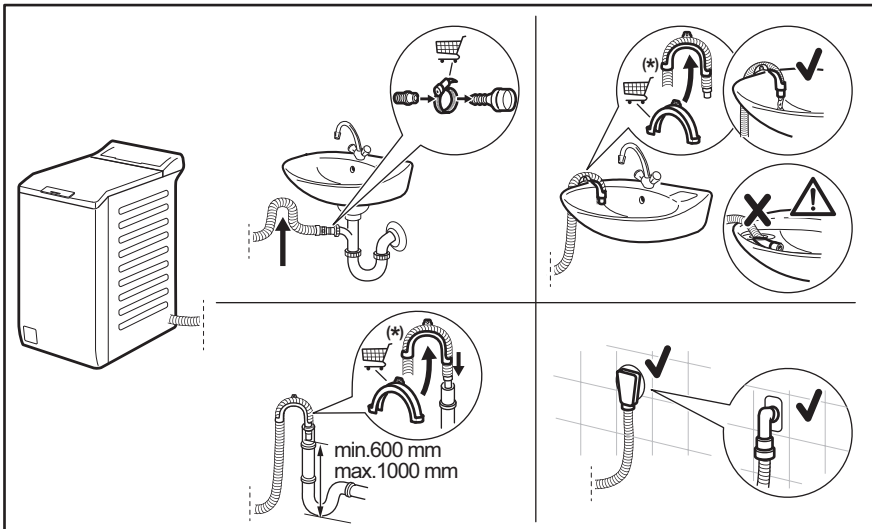
5.2 The inlet hose



Accessories delivered with the appliance may vary depending on the model.

i Make sure there is no damage to hoses and there are no leaks from the couplings. Do not use an extension hose if the inlet hose is too short. Contact the service centre for information on inlet hose replacement.

5.3 Water drainage



i

Subject to change without notice.

The drain hose should stay at a height of no less than 600 mm and not more than 1000 mm. You can extend the drain hose to maximum 4000 mm. Contact the authorised service centre for the other drain hose and the extension.

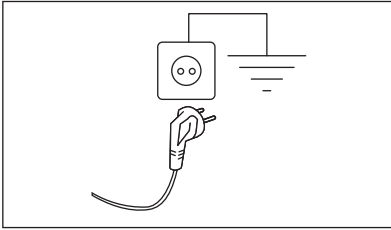
5.4 Electrical connection

At the end of installation you can connect the mains plug to the mains socket.

The rating plate and the 'Technical Data' chapter indicate the necessary electrical ratings. Make sure that they are compatible with the mains power supply.

Check that your domestic electrical installation can take the maximum load required, also taking into account any other appliances may also be in use.

Connect the appliance to an earthed socket.



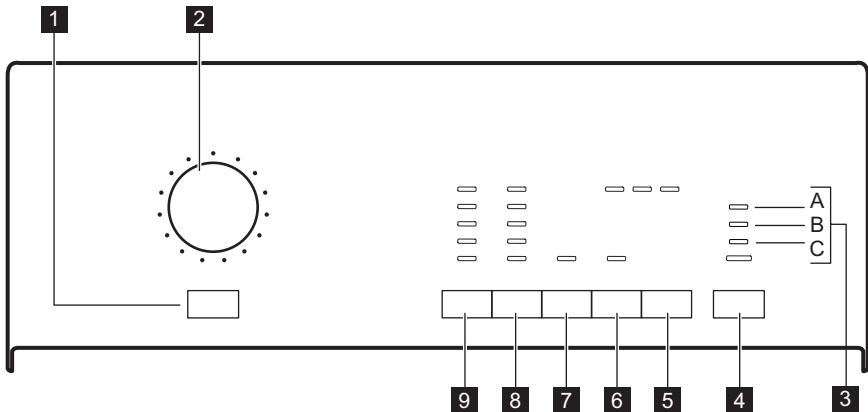
The power supply cable must be easily accessible after installing the appliance.

For any electrical work required to install this appliance, contact our Authorised Service Centre.

The manufacturer does not accept any responsibility for damage or injury through failure to comply with the above safety precaution.

6. CONTROL PANEL

6.1 Control panel description



- 1** On/Off button
- 2** Programme knob
- 3** Indicators
- 4** Start/Pause button


- 5** Delay Start button
- 6** Time Save button
- 7** Extra Rinse button
- 8** Spin reduction button (Spin)

9 Temp. button

6.2 Indicators

A	Child Lock	Child safety lock	The indicator comes on when you activate this device.
B	Door	Door lock indicator	You cannot open the appliance door when the indicator is on. You cannot open the appliance door when the indicator flashes. Wait for some minutes before you open the door. You can open the door only when the indicator goes off.
C	End	End of cycle	The indicator comes on when the programme is completed.

7. PROGRAMME CHART

Programme Default temperature Temperature range	Maximum load Reference spin speed	Programme description (Type of load and level of soiling)
Cottons 40°C 95°C - Cold ✱	6 kg 1200 rpm	White cotton and coloured cotton. Normally, heavily and lightly soiled items.
Cottons + Prewash 40°C 95°C - Cold ✱	6 kg 1200 rpm	White cotton and coloured cotton. Heavily and normally soiled items.
Cottons + Stain 60°C 95°C - 40°C	6 kg 1200 rpm	White and resistant coloured cottons . Heavily soiled items.
Synthetics 40°C 60°C - Cold ✱	3 kg 1200 rpm	Synthetic items or mixed fabric items. Normally soiled items.
Easy Iron 40°C 60°C - Cold ✱	1 kg 1000 rpm	Synthetic items requiring a gentle wash. Normally and lightly soiled items. 1)
Delicates 30°C 40°C - Cold ✱	2 kg 1200 rpm	Delicate fabrics such as acrylics, viscose and mixed fabrics requiring gentler washing. Normally and lightly soiled items.
 Wool/Silk 40°C 40°C - Cold ✱	1 kg 1200 rpm	Machine washable wool, hand washable wool and other fabrics with «hand washing» care symbol²⁾.
Spin	6 kg 1200 rpm	All fabrics, except woollens and delicate fabrics. To spin the laundry and to drain the water in the drum.
Drain	6 kg	To drain the water in the drum. All fabrics.

Programme Default temperature Temperature range	Maximum load Reference spin speed	Programme description (Type of load and level of soiling)
Rinse Cold ✱	6 kg 1200 rpm	To rinse and spin the laundry. All fabrics , except woollens and very delicate fabrics. Reduce the spin speed accordingly to the type of laundry.
Mix 20° Cold ✱	2,5 kg 1200 rpm	Special programme for lightly soiled cotton, synthetic and mixed fabrics. Select this programme to reduce the energy consumption. Make sure that the detergent is suitable for low temperatures in order to have good washing results ³⁾ .
Jeans 40°C 60°C - Cold ✱	3 kg 1200 rpm	Items in denim and jersey. Also for dark coloured items.
20min 3kg 30°C 40°C - 30°C	3 kg 1200 rpm	Cotton and synthetic items . Lightly soiled or worn only once.
Eco 40-60 40 °C ⁴⁾	6 kg 1200 rpm	White cotton and fast-coloured cotton. Normally soiled items. The energy consumption decreases and the time of the washing programme is extended, ensuring good washing results.

1) To reduce creasing, this cycle regulates the water temperature and performs a soft wash and spin phase. The appliance adds some rinses.

2) During this cycle the drum rotates slowly to ensure a gentle wash. It can seem that the drum doesn't rotate or doesn't rotate properly, but this is normal for this programme.


3) The appliance performs the short heating phase if the water temperature is below 20°C. The appliance can show the temperature setting as "cold".




4) According to Commission Regulation EU 2019/2023, this programme at 40 °C is able to clean normally soiled cotton laundry declared to be washable at 40 °C or 60 °C, together in the same cycle.



For the reached temperature in the laundry, the programme duration and other data, please refer to 'Consumption Values' chapter.
The most efficient programmes in terms of energy consumption are generally those that perform at lower temperatures and longer duration.

Programme options compatibility



Programme	Options	Spin		Extra Rinse ¹⁾	Time Save ²⁾	Delay Start
Cottons		■	■	■	■	■
Cottons + Prewash		■	■	■	■	■

Programme	Options	Spin		Extra Rinse 1)	Time Save 2)	Delay Start
Cottons + Stain		■	■	■	■	■
Synthetics		■	■	■	■	■
Easy Iron		■	■	■	■	■
Delicates		■	■	■	■	■
Wool/Silk  		■	■			■
Spin		■				■
Drain						
Rinse		■	■	■		■
Mix 20°		■	■	■		■
Jeans		■	■	■	■	■
20min 3kg		■				■
Eco 40-60		■	■			■

1) If you set Extra Rinse option, the appliance adds some additional rinses. In the Rinse programme, if you set a low spin speed the appliance performs delicate rinses and a short spin.

2) If you set the shortest duration, we recommend that you decrease the load size. It is possible to fully load the appliance, however the washing results can be less satisfactory.

Suitable detergents for washing programmes

Programme	Universal powder ¹⁾	Liquid Universal	Liquid for coloureds	Delicates woollens	Special
Cottons	▲	▲	▲	--	--
Cottons + Prewash	▲	▲	▲	--	--
Cottons + Stain	▲	▲	▲	--	--
Synthetics	▲	▲	▲	--	--
Easy Iron	▲	▲	▲	--	--
Delicates	--	--	--	▲	▲
Wool/Silk  	--	--	--	▲	▲
Mix 20°	--	▲	▲	--	--
Jeans	--	--	▲	▲	▲
20min 3kg	--	▲	▲	--	--

Programme	Universal powder ¹⁾	Liquid Universal	Liquid for coloureds	Delicates woollens	Special
Eco 40-60	▲	▲	▲	--	--

1) At temperature higher than 60 °C the use of powder detergent is recommended.

▲ = Recommended

-- = Not recommended

7.1 Woolmark Wool Care - Blue



The wool wash cycle of this machine has been approved by The Woolmark Company for the washing of wool garments labelled as «hand wash» provided that the products are washed according to the instructions on the garment label and those issued by the manufacturer of this washing machine. M1145

The Woolmark symbol is a Certification mark in many countries.

8. OPTIONS

8.1 Temp.

Set this option to change the default temperature.

Indicator ✖ = cold water.

The indicator of the set temperature comes on.

8.2 Spin

With this option you can decrease the default spin speed.

The indicator of the set speed comes on.

Additional spin options:

Rinse Hold

- Set this option to prevent the laundry creases.
- The relevant indicator comes on.
- The washing programme stops with the water in the drum. The drum turns regularly to prevent the laundry creases.
- The lid stays locked. You must drain the water to unlock the lid.



To drain the water refer to 'At the end of the programme'.

8.3 Extra Rinse

With this option you can add some rinses to some washing programmes, refer to "Programme chart".

Use this option for persons allergic to detergents and in areas where the water is soft.

The related indicator comes on.

8.4 Time Save

With this option you can decrease the programme duration.

Set this function for items with light soil or items to refresh.

8.5 Delay Start

With this option you can delay the start of a programme by 9, 6 or 3 hours.

The indicator of the set value are on.

9. SETTINGS

9.1 Acoustic signals

The acoustic signals operate when:

- You activate the appliance.
- You deactivate the appliance.
- You press the buttons.
- The programme is completed.
- The appliance has a malfunction.

To **deactivate/activate** the acoustic signals, press Temp. and Spin at the same time for 6 seconds.



If you deactivate the acoustic signals, they continue operate when the appliance has a malfunction.

9.2 Child Lock

With this option you can prevent children from playing with the control panel.

- To **activate/deactivate** this option, press Extra Rinse and Time Save at the same time until the indicator Child Lock **comes on/goes off**.

You can activate this option:

- After you press Start/Pause : the options and the programme knob are locked.
- Before you press Start/Pause : the appliance cannot start.

9.3 Permanent Extra Rinse

With this option you can permanently have an extra rinse when you set a new programme.

- To **activate/deactivate** this option press Time Save and Delay Start at the same time.

10. BEFORE FIRST USE



During installation or before first use you may observe some water in the appliance. This is residual water left in the appliance after a full functional test in the factory to ensure the appliance is delivered to customers in perfect working order and is no cause for concern.

1. Connect the mains plug to the mains socket.

2. Open the water tap.
3. Put 2 litre of water in the detergent compartment for washing phase. This activates the drain system.
4. Put a small quantity of detergent in the compartment for washing phase.
5. Set and start a programme for cotton at the highest temperature without laundry. This removes all possible dirt from the drum and the tub.

11. DAILY USE

11.1 Activating the appliance

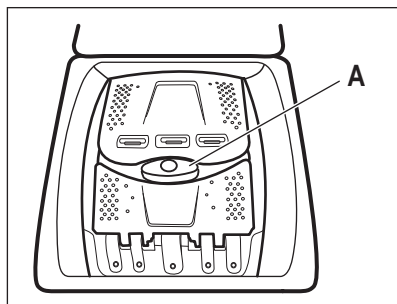
1. Connect the mains plug to the mains socket.
2. Open the water tap.
3. Press button On/Off to activate the appliance.

A short tune sounds.

11.2 Loading the laundry

1. Open the appliance lid.

2. Push the button **A**.



The drum opens automatically.

3. Put the laundry in the drum, one item at a time.
4. Shake the items before you put them in the appliance.

Make sure not to put too much laundry in the drum.

5. Close the drum and the lid.

⚠ CAUTION!

Before you close the lid of your appliance, make sure that you close the drum correctly.

11.3 Detergent compartments. Using detergent and additives

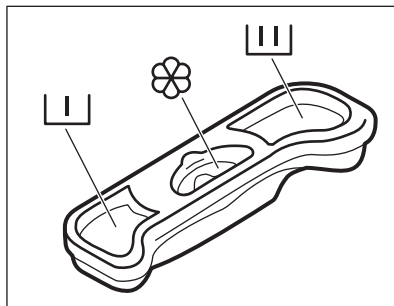
1. Measure out specified detergents and the fabric conditioner.
2. Put the detergent and the fabric conditioner into the proper compartments.



Always follow the instructions that you find on the packaging of the detergent products, but we recommend that you do not exceed the maximum indicated level. This quantity will however guarantee the best washing results.



When using liquid detergents add them into a dosing ball (supplied by the detergent's manufacturer). Put the dosing ball inside the washing machine's drum, on top of the garments.



Detergent compartment for prewash phase. When you set a programme with a stain, add detergent (powder or liquid).



Detergent compartment for washing phase.



Compartment for liquid additives (fabric conditioner, starch).

The mark **M** is the maximum level for the quantity liquid additives.

11.4 Setting a programme

1. Turn the programme knob and set the programme:
 - The indicator of Start/Pause flashes.
 - The indicators of the default temperature and spin speed come on.
2. If necessary, change the temperature, the spin speed or add available options. When you activate an option, the indicator of the set option comes on.

11.5 Starting a programme without the delay start

Press button Start/Pause to start the programme. The relevant indicator stops to flash and stays on. The programme starts, the lid is locked.



The drain pump can operate for a short time when the appliance fills water.

11.6 Starting a programme with the delay start

1. Press button Delay Start again and again until the indicator of the delay you want to set comes on.

2. Press button Start/Pause.

The appliance starts the countdown of the delay start.

When the countdown is completed, the programme starts automatically.



Before you press button Start/Pause to start the appliance, you can cancel or change the set of the delay start.

11.7 Cancelling the delay start

To cancel the delay start:

1. Press button Start/Pause to set the appliance to pause.

The related indicator flashes.

2. Press button Delay Start repeatedly until no indicator is on.
3. Press button Start/Pause again to start the programme immediately.

11.8 Interrupting a programme and changing a option

You can change only some options before they operate.

1. Press button Start/Pause.
2. Change the option set.
3. Press the button Start/Pause again.

The programme continues.

11.9 Cancelling a running programme

1. Turn the programme knob to **Stop** to cancel the programme.
2. Turn again the programme knob to a new washing programme. At this time you can also set the available functions.



Before starting the new programme the appliance could drain the water. In this case, make sure that the detergent is still in the detergent compartment, if not fill the detergent again

11.10 The OptiSense load detection

After touching the Start/Pause button:

The OptiSense starts estimating the weight of the load to calculate the real programme duration. The appliance automatically adjusts the programme duration to the load to achieve perfect washing results in the minimum possible time



The OptiSense is not available with some programmes such as Wool/Silk , programme with short cycles.

11.11 Opening the Lid when the programme operates

CAUTION!

If the temperature and level of the water in the drum are too high, the Door indicator stays on and you cannot open the lid.

To open the lid proceed as follows:

1. Press the button On/Off for some seconds to deactivate the appliance.
2. Wait for some minutes and then open carefully the lid.
3. Close the lid.
4. Activate the appliance and set the programme again.

11.12 Opening the Lid when the delay start is active

While the delay start operates, the appliance lid is locked.

To open the appliance lid:

1. Press button Start/Pause. The Door indicator goes off.
2. Open the appliance lid.
3. Close the lid and press button Start/Pause.

The delay start continues.

11.13 End of cycle

When the programme has finished, the appliance stops automatically. The acoustic signal operates (if it is active).

The End indicator goes on when the cycle is finished with lid unlocked.

The indicator of Start/Pause button goes off.

1. Press button On/Off to deactivate the appliance.

After five minutes from the end of the programme, the energy saving function automatically deactivates the appliance.

2. Remove the laundry from the appliance.
3. Make sure that the drum is empty.
4. Keep the lid open, to prevent mildew and odours
5. Close the water tap.

11.14 Draining water out after end of cycle

The washing programme is completed, but there is water in the drum:

The drum turns regularly to prevent the creases in the laundry.

The Door indicator is on. The lid stays locked.

You must drain the water to open the lid:

1. If necessary, decrease the spin speed.
2. Press the Start/Pause button.

The appliance drains the water and spins.

3. When the programme is completed and the Door indicator goes off, you can open the lid .

4. Press On/Off some seconds to deactivate the appliance.



The appliance drains and spins automatically after approximately 18 hours.

11.15 AUTO Stand-by option

The AUTO Stand-by option automatically deactivates the appliance to decrease the energy consumption when:

- You do not use the appliance for 5 minutes before you press Start/Pause button.
Press the button On/Off to activate the appliance again.
- After 5 minutes from the end of the washing programme
Press the button On/Off to activate the appliance again.
Turn the programme knob to set a new cycle.

12. HINTS AND TIPS

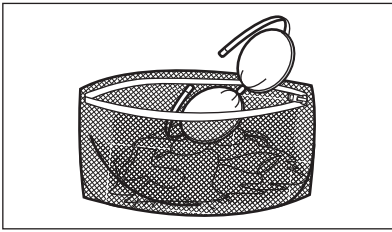
WARNING!

Refer to Safety chapters.

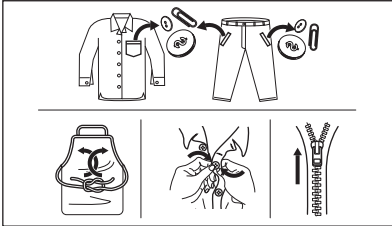
12.1 The laundry load

- Divide the laundry into: white, coloured, synthetics, delicates and wool.
- Follow the washing instructions on the laundry care labels.
- Do not wash white and coloured items together.
- Some coloured items can discolour with the first wash. We recommend that you wash them separately for the first couple of times.
- Turn multilayered fabrics, wool and items with printed illustrations inside out.
- Pre-treat stubborn stains.
- Wash stubborn stains with a special detergent.

- Be careful with curtains. Remove the hooks and put the curtains in a washing bag or pillowcase.
- A very small load can cause balance problems with the spin phase leading to excessive vibration. If this occurs:
 - a. interrupt the programme and open the door (refer to "Daily Use" chapter);
 - b. manually redistribute the load so that the items are spaced evenly around the tub;
 - c. press the Start/Pause button. The spin phase continues.
- Button up pillowcases, close zippers, hooks and poppers. Tie up belts, cords, shoelaces, ribbons and any other loose elements.
- Do not wash laundry without hems or with cuts. Use a washing bag to wash small and/or delicate items (e.g. underwired bras, belts, tights, shoelaces, ribbons, etc.).



- Empty pockets and unfold the items.



12.2 Stubborn stains

For some stains, water and detergent is not sufficient.

We recommend that you pre-treat these stains before you put the items in the appliance.

Special stain removers are available. Use the special stain remover that is applicable to the type of stain and fabric.

12.3 Detergent type and quantity.

The choice of detergent and use of correct quantities not only affects your wash performance, but also helps to avoid waste and protect the environment:

- Use only detergents and other treatments specially made for washing machines. First, follow these generic rules:
 - powder detergents for all types of fabric, excluding delicate. Prefer powder detergents containing bleach for whites and laundry sanitization,
 - liquid detergents, preferably for low temperature wash programmes (60 °C max) for all types of fabric, or special ones for woollens only.
- The choice and quantity of detergent will depend on: type of fabric (delicates, woollens, cottons, etc), the colour of clothes, size of the load, degree of soiling,

wash temperature and hardness of the water used.

- Follow the instructions that you find on packaging of the detergents or other treatments without exceeding the indicated maximum level (**MAX**).
- Do not mix different types of detergents.
- Use less detergent if:
 - you are washing a small load,
 - the laundry is lightly soiled,
 - there is large amounts of foam during washing.
- When using detergent tabs or pods, always put them inside the drum, not in the detergent dispenser.

Insufficient detergent may cause:

- unsatisfactory washing results,
- the wash load to turn grey,
- greasy clothes,
- mould in the appliance.

Excessive detergent may cause:

- sudsing,
- reduced washing effect,
- inadequate rinsing,
- a greater impact for the environment.

12.4 Ecological hints

To save water, energy and to help protect the environment, we recommend that you follow these tips:

- **Normally soiled laundry** may be washed **without prewash** in order to save detergent, water and time (the environment is protected too!).
- Loading the appliance to the **maximum capacity indicated for each programme helps to reduce energy and water consumption.**
- With adequate pre-treatment, stains and limited soiling can be removed; the laundry can then be washed at a lower temperature.
- To use the correct quantity of detergent, refer to the quantity suggested by the detergent producer and check the water hardness of your domestic system. Refer to "Water hardness".
- Set the **maximum possible spin speed** for the selected washing programme **before drying your laundry in a tumble dryer.** This will save energy during drying!

12.5 Water hardness

If the water in your area is hard or medium hard, we recommend that you use a water softener for washing machines.

The water is hard or medium hard when the hardness exceeds 8dH.

In areas where the water is soft it is not necessary to use a water softener.

To find out the water hardness in your area, contact your local water authority.

Use the correct quantity of water softener. Follow the instructions that you find on the packaging of the product.

13. CARE AND CLEANING

WARNING!

Refer to Safety chapters.

13.1 Periodic cleaning schedule

Periodic cleaning helps to extend the life of your appliance.

After each cycle, keep the lid and the drum door ajar to get air circulation and dry the humidity inside the appliance: this will prevent mildew and odours.

If the appliance is not used for a long time: close the water tap and unplug the appliance.

Indicative periodic cleaning schedule:

Descaling	Twice a year
Maintenance wash	Once a month
Clean lid seal	Every two months
Clean drum	Every two months
Clean detergent dispenser	Every two months
Clean drain pump filter	Twice a year
Clean the inlet hose and the valve filter	Twice a year

The following paragraphs explain how you should clean each part.

13.2 Removing foreign objects



Make sure that pockets are empty and all loose elements are tied up before running your cycle. Refer to "The laundry load" in "Hints and tips".

Remove any foreign objects (such as metal clip, buttons, coins, etc) that you may find in the filters and the drum. Refer to "Cleaning the drum", "Cleaning the drain pump" and "Cleaning the inlet hose and the valve filter" paragraphs. If necessary, please contact the Authorised Service Centre.

13.3 External cleaning

Clean the appliance with soap and warm water only. Fully dry all the surfaces. Do not use a scouring pads or any scratching material.

CAUTION!

Do not use alcohol, solvents or chemical products.

CAUTION!

Do not use the metal surfaces with chlorine-based detergent.

13.4 Descaling



If the water in your area is hard or medium hard, we recommend that you use a water softener for washing machines.

The water is hard or medium hard when the hardness exceeds 8dH.

Regularly examine the drum to check for limescale.

Regular detergents already contain water softening agents, but we recommend to run a cycle with an empty drum and a descaling product.



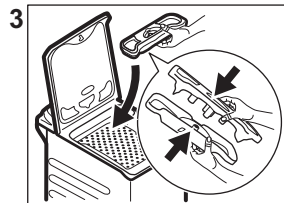
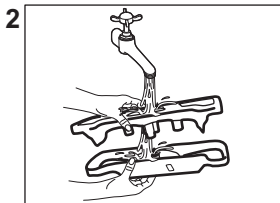
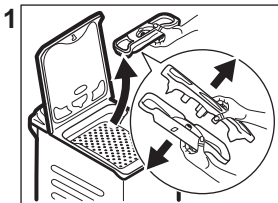
Always follow the instructions that you find on the packaging of the product.

13.5 Maintenance wash

With the low temperature programmes it is possible that some detergent stays in the drum. Perform a maintenance wash regularly. To do this:

- Remove all laundry from the drum.
- Select the cotton programme with the highest temperature with a small quantity of detergent.

13.8 Cleaning the detergent dispenser



13.6 Cleaning the drum

Regularly examine the drum to prevent rust particles. For a complete cleaning:

- Clean the drum with special products for stainless steel. Add a small quantity detergent into empty drum, in order to rinse out any left residues.

- Run a short cotton programme at high temperature.



Always obey the instructions that you find on the packaging of the product.

13.7 Lid seal

Regularly examine the seal and remove all objects from the inner part. Clean it when needed, using ammonia cream cleanser agent without scratching the seal surface.



Always obey the instructions that you find on the packaging of the product.

13.9 Cleaning the drain filter

Regularly check the drain pump filter and make sure that it is clean.



Do not clean the drain filter if the water in the appliance is hot. Do not remove the filter while the appliance operates.

Clean the drain pump if :

-The appliance does not drain the water.

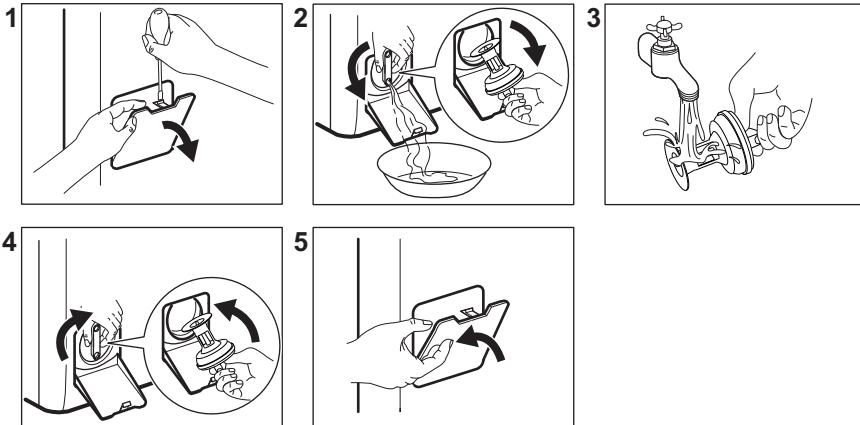
-The drum does not turn

-The appliance makes an unusual noise because of the blockage of the drain pump

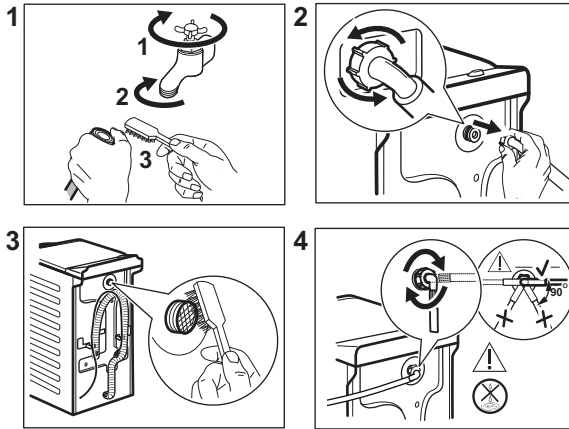
- Unscrew the filter slowly and gently until the water stops flowing out. After water has been drained, filter can be unscrewed fully.
- Always keep a rag nearby to dry up any water spillage.



Make sure that you tighten the filter correctly to prevent leakages.



13.10 Cleaning the inlet hose and the valve filter



13.11 Emergency drain

Because of a malfunction, the appliance cannot drain the water.

If this occurs, do steps (1) through (5) of 'Cleaning the drain filter'. If necessary, clean the pump.

13.12 Frost precautions

If the appliance is installed in an area where the temperature can be less than 0° C, remove the remaining water from the inlet hose and the drain pump.

1. Disconnect the mains plug from the mains socket.

2. Close the water tap.
3. Put the two ends of the inlet hose in a container and let the water flow out of the hose.
4. Empty the drain pump. Refer to the emergency drain procedure.
5. When the drain pump is empty, install the inlet hose again.

WARNING!

Make sure that the temperature is higher than 0° C before you use the appliance again.

The manufacturer is not responsible for damages caused by low temperatures.

14. TROUBLESHOOTING

WARNING!

Refer to Safety chapters.

14.1 Introduction

The start of the appliance does not occur or it stops during operation.

First try to find a solution to the problem (refer to the table). If not, contact the Authorised Service Centre.

With some problems, the acoustic signals operate. The indicator of the button Start/ Pause flashes in yellow and one of the phase indicators comes on, to show an alarm code:

- Child Lock - The appliance does not fill with water properly.
- End - The appliance does not drain the water.
- Door- The appliance lid or drum doors are open or not closed correctly. Please check both!

- The indicator of button Start/Pause flashes in red 11 times and 1 (or 2 or 3) time(s) in yellow: the mains supply is unstable. Wait until the mains supply is stable and the appliance automatically starts operating.

 **WARNING!**

Deactivate the appliance before you do the checks.

14.2 Possible failures


Problem	Possible solution
The programme does not start.	<ul style="list-style-type: none"> • Make sure that the mains plug is connected to the mains socket. • Make sure that the appliance lid and drum doors are closed properly. • Make sure that there is not a damaged fuse in the fuse box. • Make sure that the Start/Pause has been pressed. • If the delay start is set, cancel the setting or wait for the end of countdown. • Deactivate the Child Lock function if it is on.
The appliance does not fill with water properly.	<ul style="list-style-type: none"> • Make sure that the water tap is open. • Make sure that the pressure of the water supply is not too low. For this information, contact your local water authority. • Make sure that the water tap is not clogged. • Make sure that the filter of the inlet hose and the filter of the valve are not clogged. Refer to "Care and cleaning". • Make sure that the inlet hose has no kinks or bends. • Make sure that the connection of the water inlet hose is correct. • Make sure that the connections of the water inlet hoses are correct.
The appliance does not fill with water and drain immediately.	<ul style="list-style-type: none"> • Make sure that the drain hose is in the correct position. The hose may be too low. Refer to 'Installation instruction'.
The appliance does not drain the water.	<ul style="list-style-type: none"> • Make sure that the sink spigot is not clogged. • Make sure that the drain hose has no kinks or bends. • Make sure that the connection of the drain hose is correct. • Set the drain option if you set a programme without drain phase. • Set the drain option if you set an option which ends with water in the drum. • Make sure that the drain filter is not clogged. Clean the filter, if necessary. Refer to 'Care and cleaning'. • If problem remains please contact the Authorised Service Centre.
The spin phase does not operate or the washing cycle lasts longer than usually.	<ul style="list-style-type: none"> • Set the spin option. • Set the drain option if you set an option which ends with water in the drum. • Make sure that the drain filter is not clogged. Clean the filter, if necessary. Refer to 'Care and cleaning'. • Adjust manually the items in the tub and start the spin phase again. This problem may be caused by balance problems.
There is water on the floor.	<ul style="list-style-type: none"> • Make sure that the couplings of the water hoses are tight and there is not water leakages. • Make sure that the water inlet hose and the drain hose have no damages. • Make sure you use the correct detergent and the correct quantity of it.
You cannot open the appliance lid.	<ul style="list-style-type: none"> • Make sure that the washing programme is finished. • Set the drain or the spin option if there is water in the tub.

Problem	Possible solution
The appliance makes an unusual noise.	<ul style="list-style-type: none"> • Make sure the levelling of the appliance is correct. Refer to 'Installation instruction'. • Make sure that the packaging and/or the transit bolts are removed. Refer to 'Installation instruction'. • Add more laundry in the drum. The load may be too small.
The washing results are not satisfactory.	<ul style="list-style-type: none"> • Increase the detergent quantity or use a different detergent. • Use special products to remove the stubborn stains before you wash the laundry. • Make sure that you set the correct temperature. • Decrease the laundry load.
You cannot set an option.	<ul style="list-style-type: none"> • Make sure that you press only the wanted touch button(s).

After the check, activate the appliance. The programme continues from the point of interruption.

If the problem occurs again, contact the Authorised Service Centre.

The necessary data for the service centre is on the rating plate.

If the appliance shows other alarm codes (the indicator of button  flashes in red). Deactivate and activate the appliance. If the

problem continues, contact the Authorised Service Centre.

15. CONSUMPTION VALUES

15.1 Introduction



See the web link www.theenergylabel.eu for detailed information about Energy Label.



The QR code on the energy label supplied with the appliance provides a web link to the information related to the performance of the appliance in the EU EPREL database. Keep the energy label for reference together with the user manual and all other documents provided with this appliance.

It is also possible to find the same information in EPREL using the link <https://eprel.ec.europa.eu> and the model name and product number that you find on the rating plate of the appliance. Refer to 'Product description' chapter for the position of the rating plate.

15.2 Legend

kg	Laundry load.	hh:mm	Programme duration.
kWh	Energy consumption.	°C	Temperature in the laundry.
Litres	Water consumption.	rpm	Spin speed.
%	Remaining moisture at the end of spinning phase. The higher is the spin speed, the higher is the noise and the lower is the remaining moisture.		



Values and programme duration may differ depending on different conditions (e.g. room temperature, water temperature and pressure, load size and type of laundry, supply voltage) and also if you change the default setting of a programme.

15.3 According to Commission Regulation Eu 2019/2023

Eco 40-60 programme	kg	kWh	Litres	hh:mm	%	°C	rpm¹⁾
Full load	6	0.940	47.0	3:17	53.00	47	1151
Half load	3	0.518	37.0	2:35	53.00	39	1151
Quarter load	1,5	0.260	29.0	2:35	55.00	25	1151

¹⁾ Maximum spin speed.

Power consumption in different modes

Off (W)	Stand-by (W)	Delay start (W)
0.48	0.48	4.00

Time to Off/Standby mode is 15 minutes maximum.

15.4 Common programmes



These values are indicative only.

Programme	kg	kWh	Litres	hh:mm	%	°C	rpm¹⁾
Cottons ²⁾ 95°C	6	2.60	85.0	3:25	53.00	85	1200

Programme	kg	kWh	Litres	hh:mm	%	°C	rpm ¹⁾
Cottons 60°C	6	1.85	85.0	3:25	53.00	55	1200
Mix 20° ³⁾ 20°C	2,5	0.22	55.0	2:10	50.00	20	1200
Synthetics 40°C	3	0.65	55.0	2:10	35.00	40	1200
Delicates ⁴⁾ 30°C	2	0.35	50.0	1:00	35.00	30	1200
Wool/Silk 30°C	1	0.20	35.0	1:10	30.00	30	1200


1) Reference indicator of the spin speed.


2) Suitable for washing heavily soiled textiles.

3) Suitable for washing lightly soiled cottons, synthetic and mixed fabrics.

4) It also performs as quick washing cycle for lightly soiled laundry.

16. ENVIRONMENTAL CONCERNS

Recycle materials with the symbol . Put the packaging in relevant containers to recycle it. Help protect the environment and human health by recycling waste of electrical and electronic appliances. Do not dispose of

appliances marked with the symbol  with the household waste. Return the product to your local recycling facility or contact your municipal office.

aeg.com

135960610-A-472023



CE